

# HYVA BRACKETS

## LIFTING BRACKETS

Hyva

type :

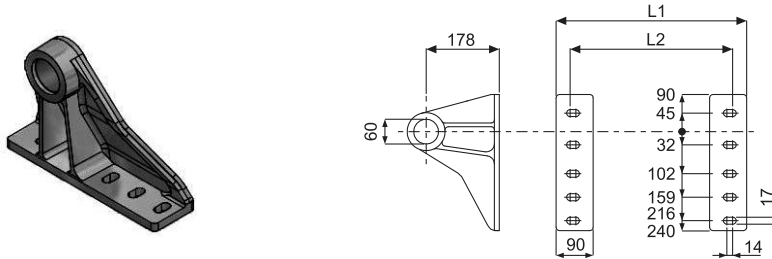
Lifting brackets

page # 1 / 1

note :

Please verify quoted dimensions with your local Hyva subsidiary or agent prior to use

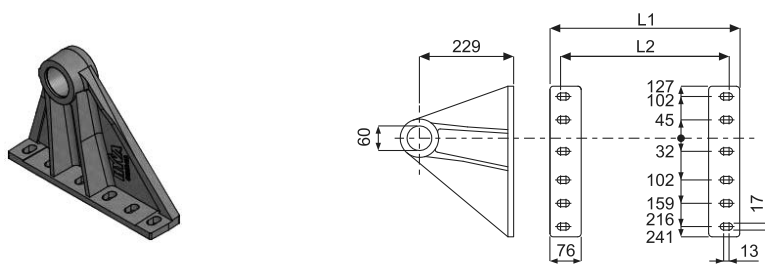
### LIFTING BRACKET FOR CYLINDER TYPE FC 110 - 129



Cylinder type	Cover	L1 (mm)	L2 (mm)
FC 110	168	305	237
FC 129	219	444	376

Bracket Type	Part no. Bracket Right	Part no. Bracket Left	Mass (Kg)	Part no. Replacement bush
Maintenance free	015 09 120	015 09 121	7.7	017 94 230
Greased version	015 09 124	015 09 125	7.9	None

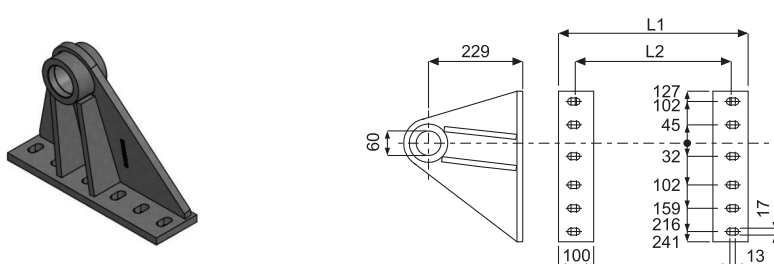
### LIFTING BRACKET FOR CYLINDER TYPE FC 129 - 191



Cylinder type	Cover	L1 (mm)	L2 (mm)
FC 129	219	462	410
FC 149	242	462	410
FC 169	242	462	410
FC 179	242	462	410
FC 191	273	482	410

Bracket Type	Part no. Bracket Right	Part no. Bracket Left	Mass (Kg)	Part no. Replacement bush
Maintenance free	015 09 130	015 09 131	9.8	017 94 240
Greased version	015 09 134	015 09 135	10	None

### LIFTING BRACKET FOR CYLINDER TYPE FC 214



Cylinder type	Cover	L1 (mm)	L2 (mm)
FC 214	273	510	410

Bracket Type	Part no. Bracket Right	Part no. Bracket Left	Mass (Kg)	Part no. Replacement bush
Maintenance free	015 06 728	015 06 726	13.5	017 94 240

## GENERAL INFORMATION

#### For all lifting brackets use:

- Bolts M16 Property Class 8.8 or higher.
- Self-locking nuts M16 Property Class 8 or higher.
- Washers 17x30 over slotted holes in the bracket.

#### Bolts kits are available:

- Q006: 12 bolts M16x60, nuts and washers for lifting brackets (2.0 kg).
- Q007: 12 bolts M16x70, nuts and washers for lifting brackets (2.2 kg).

#### Note:

- Brackets are painted black (RAL 9005), 45% gloss.
- For mounting instructions see CYL-0017.
- Raw casted dimensions are according DIN 1685, therefore weight can vary accordingly.
- For bush replacement instructions please refer to BRA-0002.